



RNHD 10" Chip-N-Dip

RNN 2 qt. Serving Bowl

RNC1 Ranch Mug

RNXL 18 oz. Chili Bowl

RNG 7" Salad Plate

RNF 10" Dinner Plate

Frankoma Ranch dinnerware's rich, traditional design transforms any home into a stately ranch house of the Old West.

# The Frankoma Ranch Collection

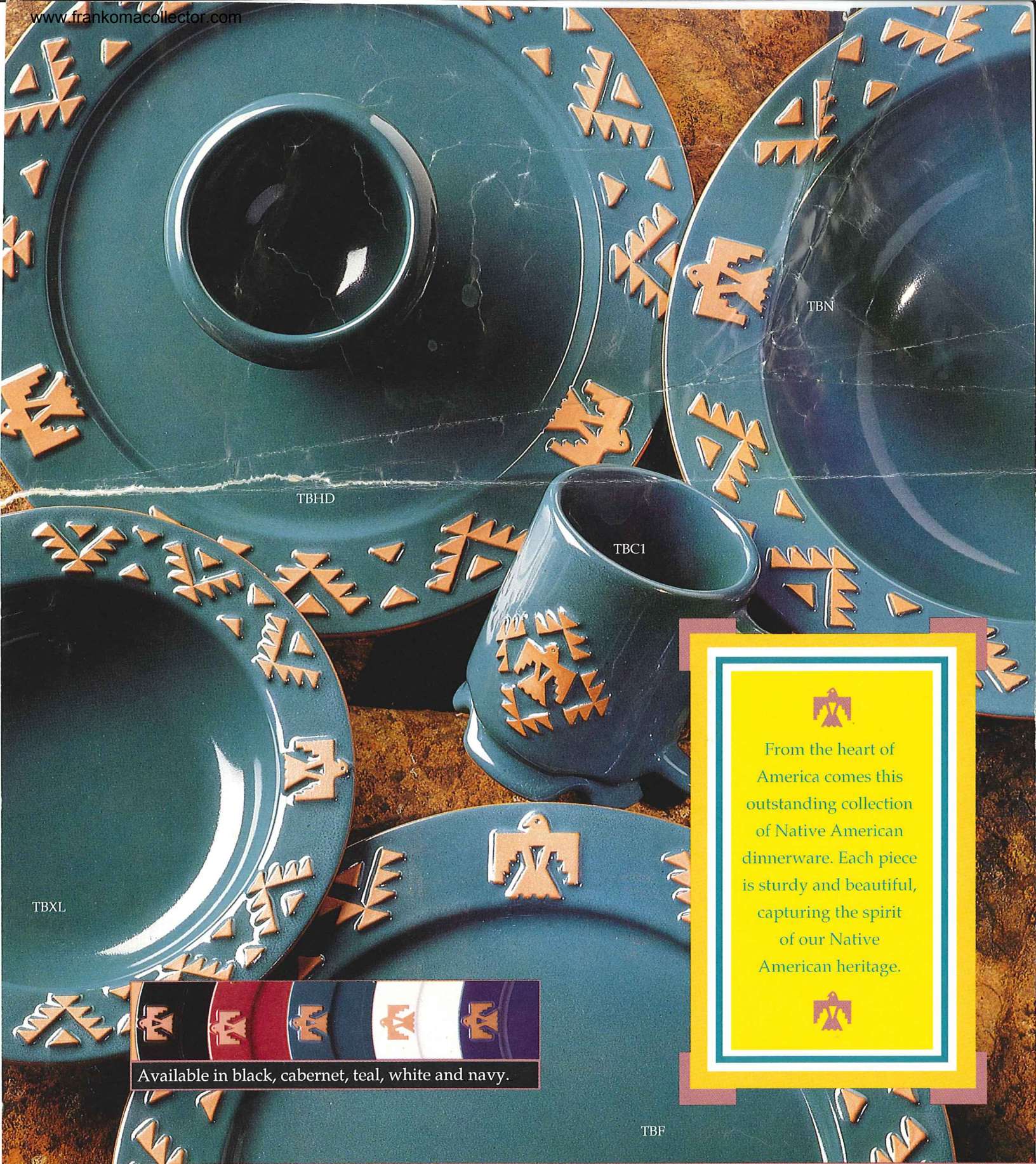
Microwaveable, dishwasher safe and ovenproof.

Made in U.S.A.

## FRANKOMA POTTERY

A Division of Frankoma Industries, Inc.  
Box 789 • 2400 Frankoma Road  
Sapulpa, Oklahoma 74067  
918-224-5511 • 800-331-3650  
Fax 918-227-3117





TBHD

TBN

TBC1

TBXL

TBF



From the heart of America comes this outstanding collection of Native American dinnerware. Each piece is sturdy and beautiful, capturing the spirit of our Native American heritage.



Available in black, cabernet, teal, white and navy.

# The Frankoma Native American Collection

Microwaveable, dishwasher safe and ovenproof.

Made in U.S.A.

## FRANKOMA POTTERY

A Division of Frankoma Industries, Inc.  
Box 789 • 2400 Frankoma Road  
Sapulpa, Oklahoma 74067  
918-224-5511 • 800-331-3650  
Fax 918-227-3117





RSN- 2 Qt. Bowl

RSF-Dinner Plate

RSXL-Soup Bowl

RSG-Salad Plate

RSJ-Teapot

RSC-Coffee Cup

6H-Salt & Pepper

6E-Saucer

6A-Creamer

6B-Sugar Bowl

5PS-Tray

## FRANKOMA POTTERY

A Division of Frankoma Industries, Inc.

Box 789 • 2400 Frankoma Road • Sapulpa, Oklahoma 74067  
918-224-5511 • 800-331-3650 • Fax 918-227-3117

# Rose Collection

Microwaveable, dishwasher safe and ovenproof.

Handcrafted in U.S.A.

Shown in Teal/Terra Cotta (TC).  
Also available in Black/TC, White/TC, Navy/TC,  
and Cabernet/TC. Forest/TC available January, 1993.

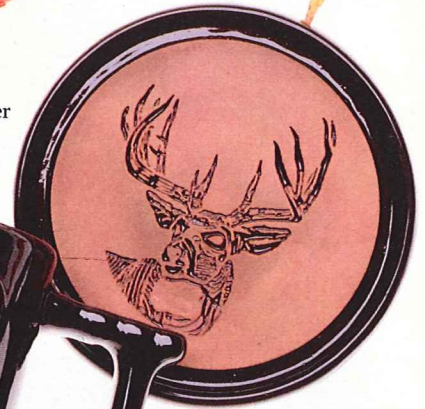




WDC1-Duck Mug  
265WD-Duck Coaster



265DR-Deer Coaster  
DRC1-Deer Mug



PHC1-Pheasant Mug  
265PH-Pheasant Coaster



265BS-Bass Coaster  
BSC1-Bass Mug



# SPORTSMAN

COLLECTION

Microwaveable, dishwasher safe and ovenproof.  
Coasters are water absorbent.  
Handcrafted in U.S.A.

Shown in Teal and Black.  
Also available in White, Navy, and Cabernet.  
Forest available January, 1993.

## FRANKOMA POTTERY

A Division of Frankoma Industries, Inc.  
Box 789 • 2400 Frankoma Road • Sapulpa, Oklahoma 74067  
918-224-5511 • 800-331-3650 • Fax 918-227-3117



# The Holiday Collection



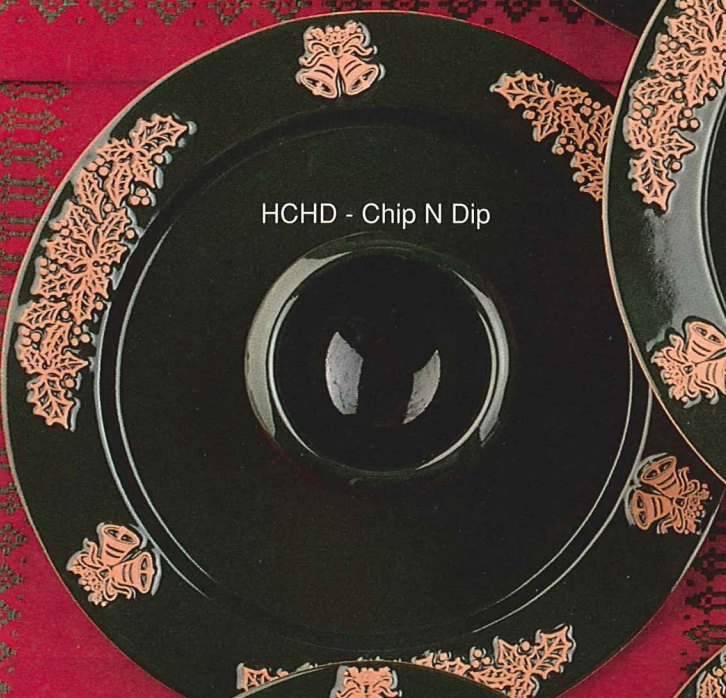
HCP - Serving Platter



109 - Baby Bird



108 - Mother Bird



HCHD - Chip N Dip



HCN - 2 Qt. Serving Bowl



HCG1 - Mug



HCXL - Soup Bowl



HCG - Salad Plate  
HCF - Dinner Plate

## FRANKOMA POTTERY

A Division of Frankoma Industries, Inc.  
PO Box 789 • 2400 Frankoma Road  
Sapulpa, OK 74067  
918-224-5511 • 800-331-3650  
Fax 918-227-3117

Microwaveable, Dishwasher safe and Ovenproof  
Handcrafted in the U.S.A.  
Available in Forest/TC



QLC1 - Quail Mug



SPHD - Chip-N-Dip



DRC1 - Deer Mug



265Q - Coaster



TKC1 - Turkey Mug



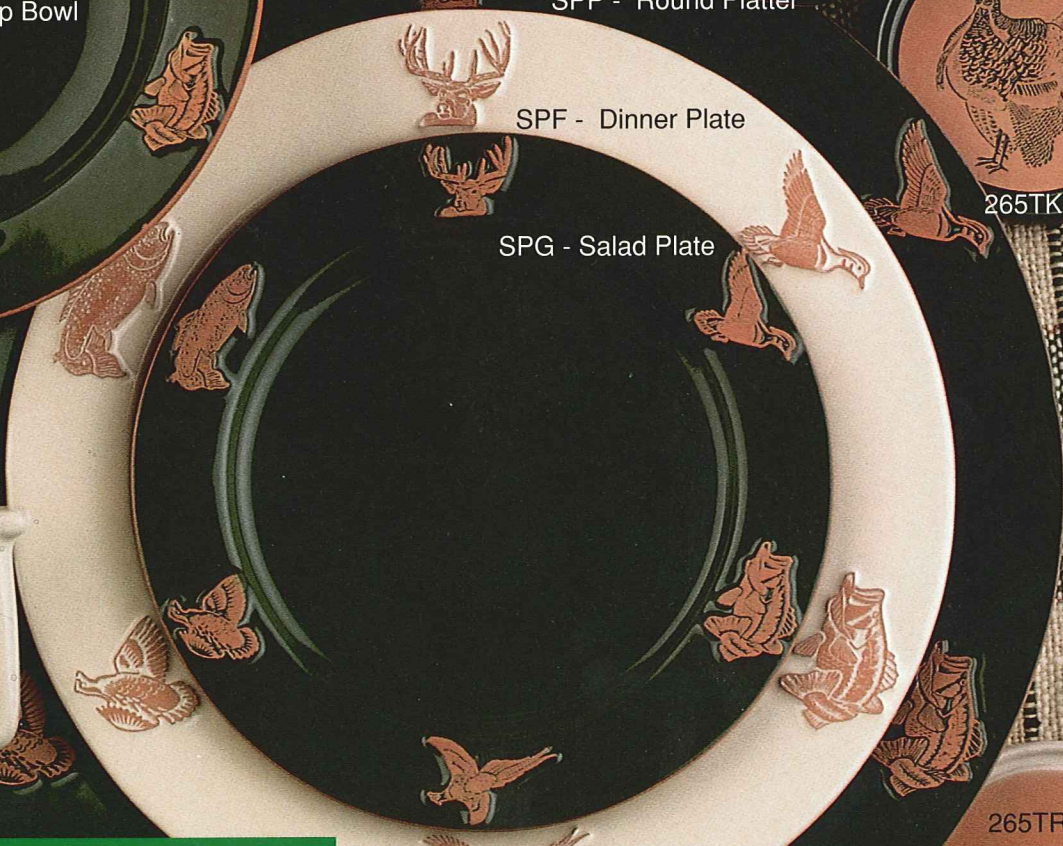
SPXL - Soup Bowl



SPP - Round Platter



SPF - Dinner Plate



SPG - Salad Plate

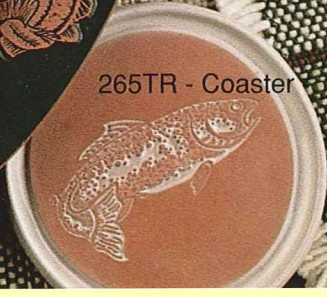
265TK - Coaster



TRC1 - Trout Mug



265TR - Coaster



# SPORTSMAN COLLECTION

Microwaveable, Dishwasher safe and Ovenproof  
Available in Bone/TC & Forest/TC  
Handcrafted in the U.S.A.

## FRANKOMA POTTERY

A Division of Frankoma Industries, Inc.  
PO Box 789 • 2400 Frankoma Road • Sapulpa, OK 74067  
918-224-5511 • 800-331-3650 • Fax 918-227-3117

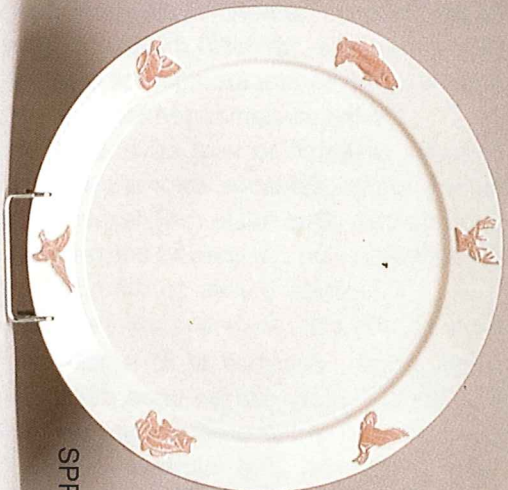


Microwavable, Dishwasher safe and Ovenproof  
Handcrafted in the U.S.A.

# Great Gifts from Frankoma



RNP



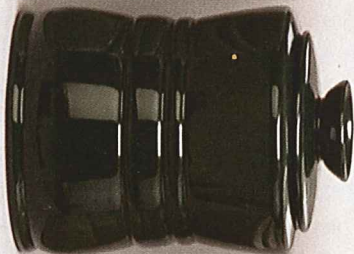
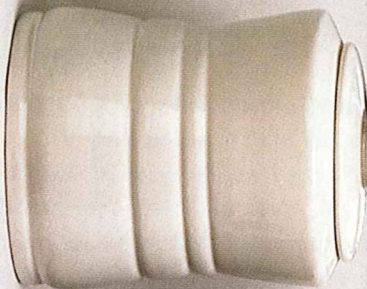
SPP



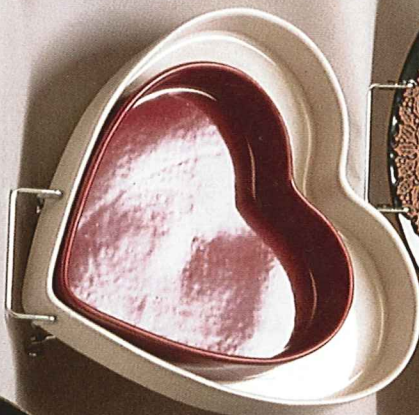
HCP



TBP



13" Charger/Platters



HBP - 10" Heart Bakepan  
MHBP - 7" Heart Bakepan



26G - Canister  
w/Strainer



RNCS - Ranch Completer Set



TBH - Salt & Pepper



268 - Chip 'N' Dip

## FRANKOMA POTTERY

A Division of Frankoma Industries, Inc.

PO Box 789 • 2400 Frankoma Road

Sapulpa, OK 74067

918-224-5511 • 800-331-3650

Fax 918-227-3117



## THE **FRANKOMA** STORY

Frankoma Pottery has rightfully earned its position as America's outstanding creator of useful and beautiful earthenware. The colors, textures and crafted designs are created at Frankoma and are unique in American ceramics. Frankoma entered the field of ceramics in 1933. Our aim was to combine the traditional art of the Indians, the spirit of the American Pioneer and the creative tendencies of the youth of the Great Southwest, and mold them into useful pottery forms.

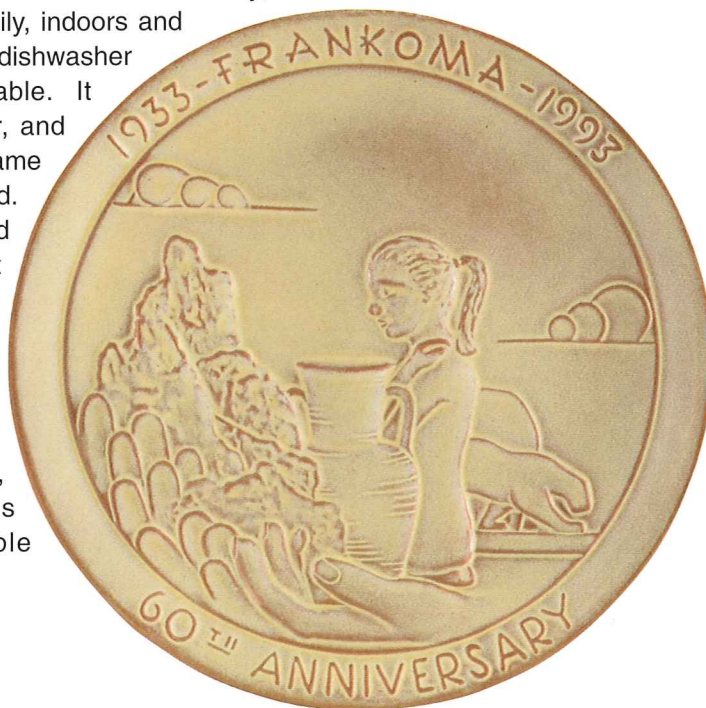
John Frank, originator of Frankoma, came to Oklahoma from Chicago in 1927. His teaching of Art and Pottery at the University of Oklahoma and his work with the geological survey - unearthing the Oklahoma clay deposits - brought together valuable material for his future venture of potting. In 1933, equipped with one small kiln, a butter churn for mixing clay, a fruit jar for grinding glazes and a few other crude tools and tables, Mr. Frank started a studio pottery in Norman, Oklahoma. It was necessary to continue teaching until enough ware was produced to prove that a product could be made of Oklahoma clays that was a contribution to art and ceramics and still salable. Resigning his teaching in 1936, he and his wife, Grace Lee, working side by side, set out on a venture of creating beautiful pottery for every day living. They felt the need of using Oklahoma clays for Oklahoma's first pottery. A clay from Ada was first used, then in 1954 a red burning clay dug at Sapulpa became the basis for all Frankoma ware. In 1938 the studio grew into a small factory as it moved from Norman to Sapulpa, where it is now. From its original 5,500 square footage, the plant has grown to its existing 79,000 square feet.

Frankoma demanded to make as fine a pottery as could be made considering the limitations of its materials. This meant constant research to take advantage of raw materials and processes as they are brought to light. A practice Frankoma still follows today. Because color is such an indispensable part of today's decor, Frankoma created a wide range of exciting colors and textures. Our Rutile Art Glazes which have identified Frankoma's unique tableware around the world have successfully been produced only on our colored earthenware clay.

Frankoma enjoys so many advantages over the more refined and delicate ceramic wares. Manufactured by a unique process, the clay body and colored glaze are fused and fired at the maturing point of the clay, then tempered as the product slowly cools. Because of its ruggedness and durability,

Frankoma Pottery can be used daily, indoors and outdoors. All of the products are dishwasher safe, oven proof and microwaveable. It keeps food and drinks hot longer, and food can even be served in the same dish in which it is baked or prepared.

Today, Frankoma is proud to continue the sculpted art heritage originated by Mr. Frank while blending a new world look using modern technology. This contemporary look, offered in a broad color palette and enhanced by High Definition Imaging, augments and strengthens Frankoma's traditional collectible products.



## 60th Anniversary Collector's Plate

"A Tribute to  
Sculpture in  
Ceramics"

*Sculpture  
by  
Joniece Frank*

### CARING FOR TERRA COTTA DINNERWARE

Terra cotta earthenware is a clay product that has been fired in temperatures that approach 2,000°F and may have unglazed surfaces. The firing process does not completely vitrify (become glass-like) the clay; therefore, it may have porosity and absorb some moisture.

Terra cotta dinnerware can be placed through normal dishwashing processes. It should be allowed to dry so that any moisture may evaporate from the pores of the terra cotta. If stains adhere to the terra cotta and normal dishwashing is ineffective, a pyrolytic process may be used. An oven with a self-cleaning cycle that reaches 800° or more (pyrolytic) will bake stains from the surface of the terra cotta.

# FRANKOMA

**Handcrafted American Giftware Since 1933**

**A Division of Frankoma Industries, Inc.**

**Box 789 • 2400 Frankoma Road  
Sapulpa, OK 74067**

**918-224-5511 • 800-331-3650**

**Fax 918-227-3117**



721- Wine Cooler



91BP- Chip-n-Dip Plate



26LC- Goblet



821- Beverage Server



5NCD-  
Chip-n-Dip Bowl



133-  
Boot Vase



M2-  
18oz. Stein



266- Tortilla Warmer



6P- Taco Plate  
4SC- Chili Cup



5P/X-  
Platter Style  
Chip-n-Dip



5QS- Nacho  
Platter



F8F-7- Fajita Server



249- Fajita Holder



E8P-1  
Cornbread Baker



818F-ajita Salsan



# The Frankoma Southwest Collection

Microwavable,  
Oven Proof, and  
Dishwasher Safe

## FRANKOMA POTTERY

A Division of Frankoma Industries, Inc.  
Box 789 • 2400 Frankoma Road  
Sapulpa, Oklahoma 74067  
918-224-5511 • 800-331-3650  
FAX 918-227-3117 • Made in U.S.A.

Brown Sahn

Black

Teal

Navy Blue

Cabernet

County Blue

Desert Gold

Mountain Haze

White

Maue

Prairie Green

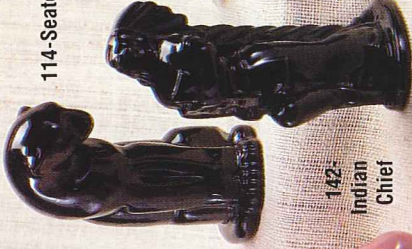


Made in U.S.A.

106-Pony Tail Girl



114-Seated Puma



116-Reclining Puma



142-Indian Chief



108-Mother Bird & 109-Baby Bird



DKY92-Donkey Mug



G0P92-Elephant Mug

### The Frankoma Collector Series

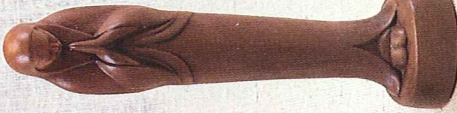
The original "Elephant Mug" was created for the National Republican Women's Club in 1968 and copyrighted by Frankoma in 1969. The "Donkey Mug" was created in 1975. The mugs are Frankoma stock items available during the dated year only. Each year is a different color. President's and Vice President's names on respective mugs in inaugural years only.

In 1965, the late John Frank, artist and founder of Frankoma Pottery, created the first annual Christmas plate made in America. The plates are based on the Christmas story and the life of Christ, inspiration for more art in all the various media than any subject in the history of the world. Eight and one half inches in diameter, the plates are done in a semi-translucent Della Robbia white glaze. The master mold was signed by Mr. Frank himself through 1973. Since 1974, the master mold is signed by his daughter, Joniece Frank. All plates are copyrighted and the master mold is destroyed on Christmas Eve. The edition is limited to that year. Past issues no longer available from factory.

102-Coyote



104-14" Madonna



101-12" Indian Maiden



103-Mare & Colt



105-Squirrel



123-Bowl Maker

6-131-5"-Indian Chief



6-132-Indian Maiden



118C-Comedy Mask



118T-Tragedy Mask



CP92-Christmas Plate "And He Called His Name Jesus"

# The Frankoma Sculpture Collection



Six pumpkin styles  
to choose from!

208-Duck



212-Bowl



222-Cornucopia



PK01



PK02



PK05



PK03



PK06



PK04



# The Frankoma Pumpkin Collection

Made in U.S.A.

**FRANKOMA POTTERY**

A Division of Frankoma Industries, Inc.

Box 789 • 2400 Frankoma Road

Sapulpa, Oklahoma 74067

918-224-5511 • 800-331-3650

FAX 918-227-3117



# The Frankoma Fall Gift Collection

Microwavable,  
Oven Proof, and  
Dishwasher Safe

**FRANKOMA POTTERY**  
A Division of Frankoma Industries, Inc.  
Box 789 • 2400 Frankoma Road  
Sapulpa, Oklahoma 74067  
918-224-5511 • 800-331-3650  
FAX 918-227-3117 • Made in U.S.A.



71-Leaf-Handled Vase

F52-Pedestalled Urn

F29-Drapery Vase

208-Duck Planter

T7SP-Simmer Pot

227-Leaf Tray

177-Planter

234-Freeform Bowl

F30AB-Pitcher & Bowl Set

228-Swan Planter

225-Ringed Cylinder Vase

226-Leaf Tray

225-Leaf Tray

T10(12") & T9 (7") Shell Bowls

Brown Satin

Black

Teal

Navy Blue

Caternet

Country Blue

Desert Gold

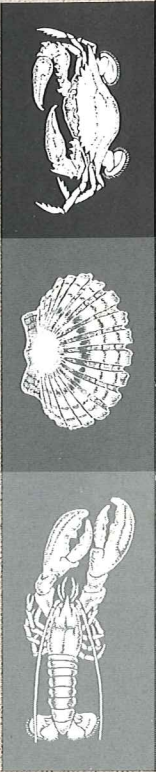
Mountain Haze

White

Maive

Prairie Green





SFN-2 QT. Serving Bowl



SFXL-18 OZ. Chowder Bowl



SFHD-Hors d'oeuvre Tray



SFE-10" Dinner Plate



SFG-7" Salad Plate



Shown: MCCI-Maryland Crab Mug  
Available with Crab only (SFCl)



# The Frankoma Seafare Collection

Microwavable, Oven Proof, and Dishwasher Safe

**FRANKOMA POTTERY**  
A Division of Frankoma Industries, Inc.  
Box 789 • 2400 Frankoma Road  
Sapulpa, Oklahoma 74067  
918-224-5511 • 800-331-3650  
Fax 918-227-3117 • Made in U.S.A



# ACADIEN CLASSIQUE®

"UN BON DINER CAJUN EXCITE  
L'ESPRIT TANDIS QU'IL  
ADOUCI LE COEUR"

*Paul Jamin*

Made in U.S.A.

ACF-Dinner Plate



ACG-Salad Plate

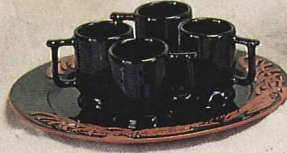
ACTG-Trivet



T7SP-Butter/Sauce  
Simmer Pot



ACDS-Demitasse Set  
w/Spoon Holder



ACN-Vegetable Bowl



ACTS-Tureen Set



ACXL-Gumbo Bowl



ACBT-Bread Tray



CFC-Crawfish  
Caddy



ACHD-Hors d'oeuvre Tray



ACCS-Coffee Service



ACCI-Coffee Mug



ACBT-Bread Trays

Colors available:  
Teal, Black, White, Navy

# ACADIEN CLASSIQUE BY FRANKOMA POTTERY

Microwavable, Oven Proof, and Dishwasher Safe

## FRANKOMA POTTERY

A Division of Frankoma Industries, Inc. • Box 789 • 2400 Frankoma Road  
Sapulpa, Oklahoma 74067 • 918-224-5511 • 800-331-3650 • FAX 918-227-3117





ACCI-Crawfish Mug



C20-Travel Mug

ARCI-Mug



M5/B-Drill Bit Mug



C15/B-Drill Bit Mug

FPCT-Frankoma Mugs



459p-b-Texas Candy Dish

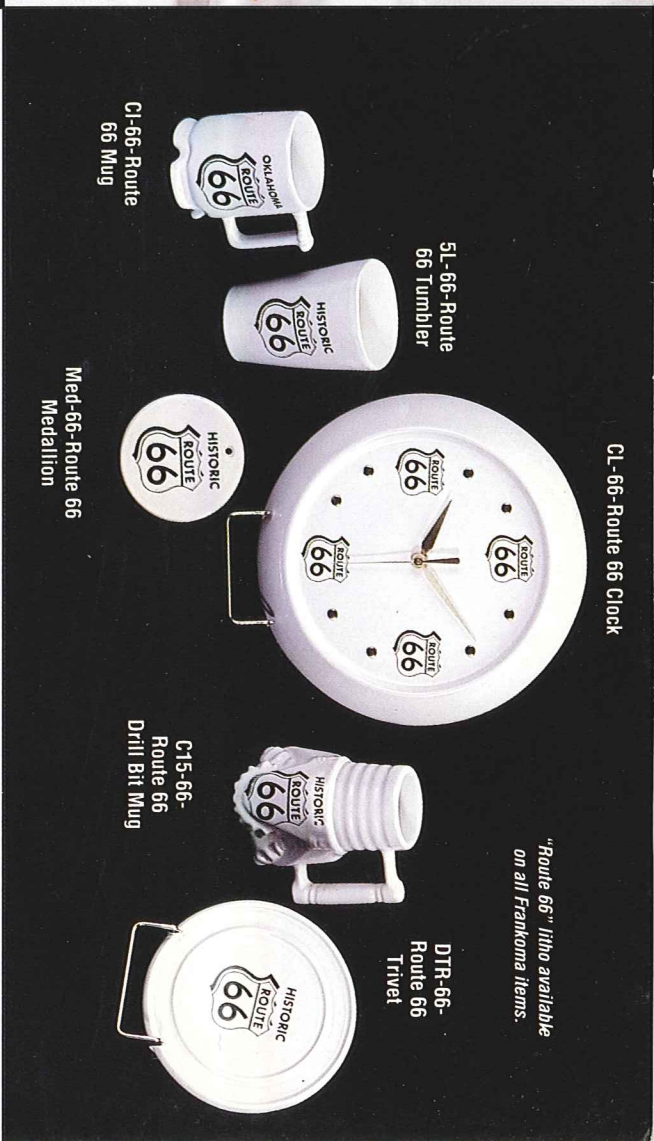
FBP-2-b-Oval Baker

"Blue Bonnets" litho available on all Frankoma items.

4Y-b-Spoon Rest

TST-b-Texas State Trivet

DTR-b-Blue Bonnet Trivet



CL-66-Route 66 Clock

5L-66-Route 66 Tumbler

C1-66-Route 66 Mug

Med-66-Route 66 Medallion

C15-66-Route 66 Drill Bit Mug

DTR-66-Route 66 Trivet

"Route 66" litho available on all Frankoma items.



LABP-LA Bake Pan

ARBP-AR Bake Pan

OKBP-OK Bake Pan

459-TX Candy Dish

TXBPRD-TX Relish Dish

461-OK Ash Tray

TXBP-TX Bake Pan

MOKBP-Mini OK Bake Pan

MTXBP-Mini TX Bake Pan

TXBP/BP-TX w/ Bean Pot

OKBP/BP-OK w/ Bean Pot

State Bake Pans are available in all Frankoma colors.

# The Frankoma Gifts & Souvenir Items

Microwavable, Oven Proof, and Dishwasher Safe

**FRANKOMA POTTERY**  
 A Division of Frankoma Industries, Inc.  
 Box 789 • 2400 Frankoma Road  
 Sapulpa, Oklahoma 74067  
 918-224-5511 • 800-331-3650  
 FAX 918-227-3117 • Made in U.S.A.





7FS-9" Cherokee Alphabet Plate

KS1-9" Kansas Plate



(left) OFTR-6 1/2" Oklahoma Flag Trivet

(right) SCTR-6 1/2" Scissortail Trivet



OK-2-9" Sooner State Plate

OK-1-9" Oklahoma Plate

TEX-1-9" Texas State Plate



RT66-6 1/2" Route 66 Trivet

7TR-6 1/2" Cherokee Alphabet Trivet

OK3-6 1/2" Civilized Tribes Trivet



IOTR-6 1/2" Iowa Trivet

LATR-6 1/2" Louisiana Trivet

ARTR-6 1/2" Arkansas Trivet



(left) LCTR-6 1/2" Crawfish Trivet

(right) ACTG-6 1/2" Acadian Trivet



94A-Creamer

94J-Teapot

94B-Sugar Bowl

94D-Pitcher

383-Boot Bank

133-6 1/2" Boot Vase

94M-Mug

94C-Coffee Cup

C33-5" Boot Mug

134-4" Boot Vase

Wagon Wheels are available in Prairie Green and Gold.

433-Boot Bookends



6T/W- Teapot w/ Warmer



5NCD- Chip-n-Dip



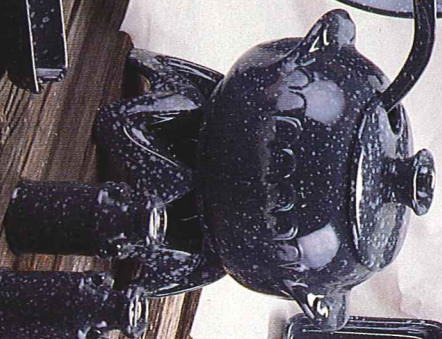
819-12" Egg Plate



5FC- Chop Plate



246/M- Tureen w/ Warmer  
247- Ladle for Soup or Punch



FBP-1- Cornbread Baker



809- Egg Plate



81- Pitcher, 91- Tray, 51C- Juice Glass



224 Set- Stackable Bowls



4M- Mug



267- Loaf Pan



218- Scalloped Bowl



5CC- Punch Cups



4SC- Soup Cup  
6P- Platter



242- Corn Dish



MCS- Milk Can  
Salt & Pepper



6S/ST- Gravy Server w/ Tray



6J- Teapot, 504/553- Miniature Cream & Sugar  
250- Warm Rolls Tile, 251- Warm Bread Tile



F30AB- Pitcher & Bowl



4P- Spoon Rest



# The Frankoma Gourmet Collection

Microwavable, Oven Proof, and Dishwasher Safe

## FRANKOMA POTTERY

A Division of Frankoma Industries, Inc.

Box 789 • 2400 Frankoma Road

Sapulpa, Oklahoma 74067

918-224-5511 • 800-331-3650

FAX 918-227-3117 • Made in U.S.A.



# The Frankoma Baking Collection

Microwavable,  
Oven Proof, and  
Dishwasher Safe

## FRANKOMA POTTERY

A Division of Frankoma Industries, Inc.  
Box 789 • 2400 Frankoma Road  
Sapulpa, Oklahoma 74067  
918-224-5511 • 800-331-3650  
FAX 918-227-3117 • Made in U.S.A.

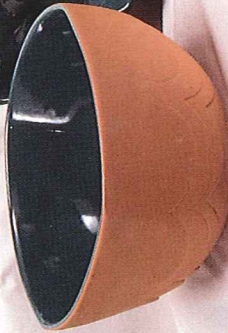
6U-Covered Bowl



227- Leaf Tray Casserole



5N-Mixing Bowl



266-Biscuit Server



91-Baking Pan



245-Baker

6W/W-  
Baker  
w/  
Warmer



4W/W-  
Baker w/  
Warmer



SJ-  
Spoon Jar



5W/W-  
Baker  
w/  
Warmer



267-Loaf Pan



FBP-2  
Omelette Server



208-Duck Casserole



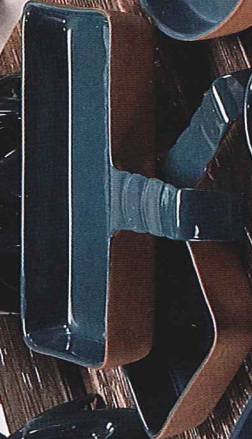
5P-Platter



4W/W-  
Baker w/  
Warmer



FBP-1-  
Carphead  
Baker



BP-Bean Pot



50-Platter



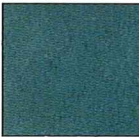
Brown Sain



Black



Teal



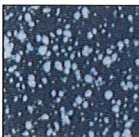
Navy Blue



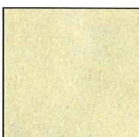
Cabernet



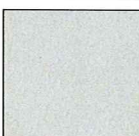
Country Blue



Desert Gold



Mountain Haze



White



Maure

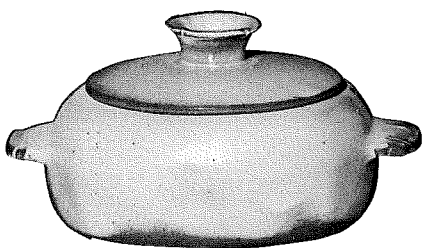


Prairie Green





# THE PLAINSMAN COLLECTION



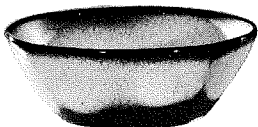
\*5V—2 QT. BAKER/BEAN POT  
\*5V/W—BAKER/W WARMER SET



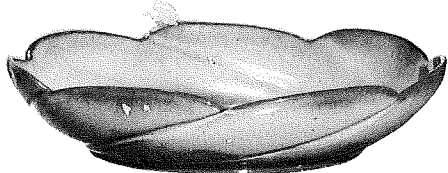
\*5W—3 QT. BAKER/BEAN POT  
\*5W/W—BAKER/W WARMER SET



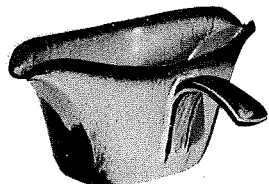
\*5N—4 1/2" QT. BOWL



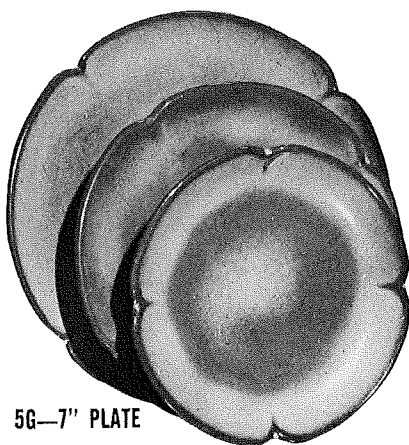
\*5X—14 OZ. CEREAL



\*218—12" BOWL

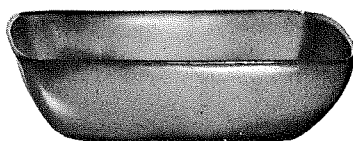


\*6S—TWO SPOUT GRAVY



5F—10" PLATE

5G—7" PLATE

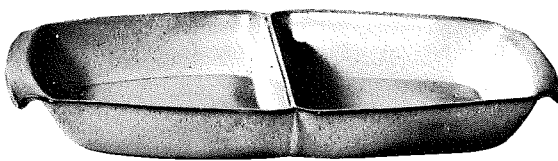


\*5NS—9" VEGETABLE

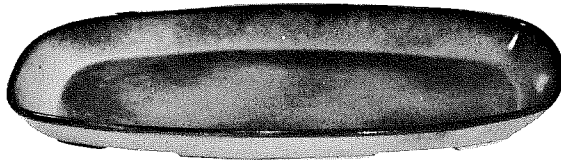


\*5P—17" PLATTER

\*5Q—13" PLATTER



\*5QD—13" DIVIDED BOWL



\*5QS—13" PLATTER

\*5PS—9" TRAY

\*6P—11" PLATTER



\*6T—6 CUP TEAPOT



\*6J—2 CUP TEAPOT



\*5M—16 OZ. MUG



\*5CC—5 OZ. TEACUP

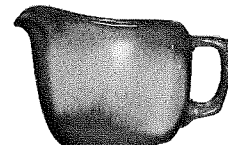


\*\* 5C—CUP  
5E—5 1/2" SAUCER



\*5H—SALT & PEPPER

\*5AB—CREAM & SUGAR SET



\*5A—12 OZ. CREAMER



\*5B—SUGAR WITH LID

## COLORS AVAILABLE

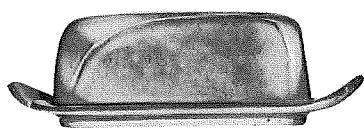
- BROWN
- COUNTRY BLUE
- CABERNET
- GOLD
- GREEN
- FOREST
- NAVY
- TEAL
- NAVY/TERRA COTTA
- TEAL/TC
- WHITE/TC

### FRANKOMA POTTERY

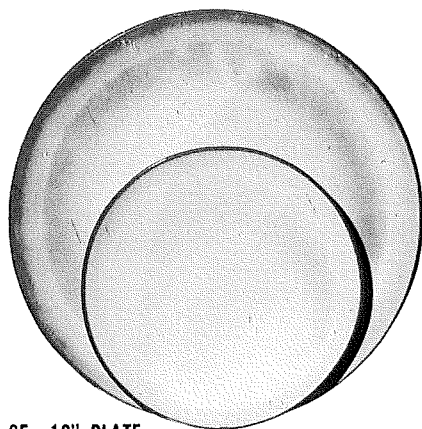
A Division of Frankoma Industries, Inc.  
 Box 789 • 2400 Frankoma Road  
 Sapulpa, Oklahoma 74067  
 918-224-5511 • 800-331-3650  
 FAX 918-227-3117



# THE WESTWIND COLLECTION



4K—BUTTER DISH



6F—10" PLATE  
6G—7" PLATE



\* 6B—SUGAR WITH LID

\* 6AB—CREAM & SUGAR SET



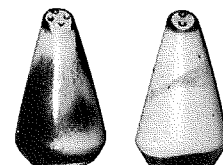
\* 6A—9 OZ. CREAMER



\* 6U—18 OZ. BAKER FOR TWO  
A COVERED CANDY DISH



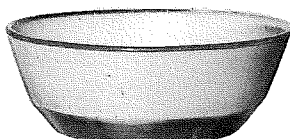
\*\* 6C—CUP  
6E—5" WELLED SAUCER



\* 6H—SALT & PEPPER



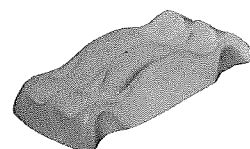
\* 6J—2 CUP TEAPOT



6X—14 OZ. BOWL



\* 81—1 QT. PITCHER



\* 249 TACO HOLDER  
BOXED 2 PER BOX



\* 6V—2 1/2 QT. BAKER  
\* 6V/W BAKER & WARMER SET

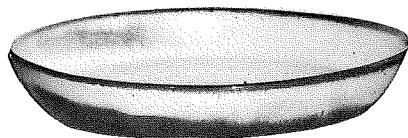


\* 6T—6 CUP TEAPOT

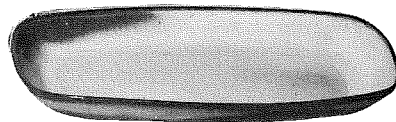


\* 80—2 QT. PITCHER

COLORS AVAILABLE  
BLACK  
COUNTRY BLUE  
CABERNET  
NAVY  
TEAL  
WHITE  
BLACK/TC  
NAVY/TC  
TEAL/TC  
WHITE/TC



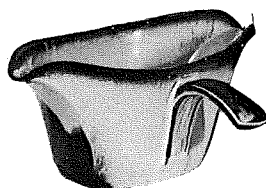
\* 91—10" BAKING DISH



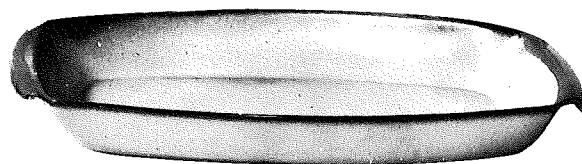
\* 5QS—13" STEAK PLATE (SHALLOW PLATTER)  
\* 6P—11" STEAK PLATE  
\* 5PS—9" TRAY



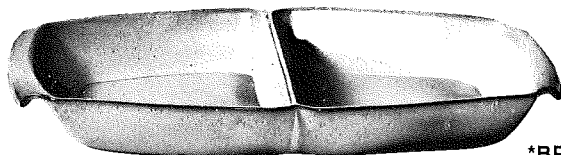
\* 6N—1 QT. BOWL



\* 6S—2 SPOUT GRAVY



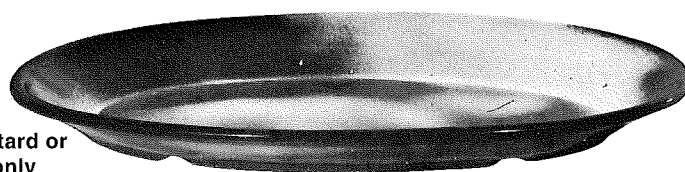
\* 5P—17" DEEP PLATTER \* 5Q—13" DEEP PLATTER



\* 5QD—13" DIVIDED BOWL



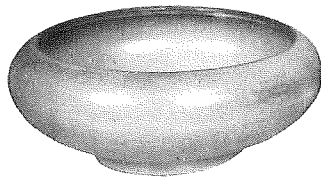
\*BP-6 oz. Bean Pot, Custard or  
chip-dip- Solid colors only  
NO Terra Cotta



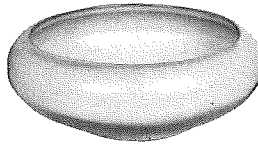
\* TP—17" OVAL PLATTER



### Appropriate Containers for Flower Arrangements and Planters



212—8" ROUND BOWL



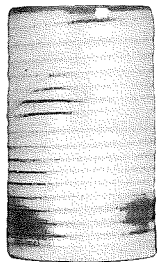
212-2—6½" ROUND BOWL



212-4- 5" ROUND BOWL -



72—10" RINGED CYLINDER VASE



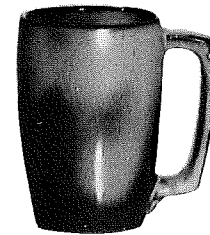
172—6½" RINGED CYLINDER VASE



272—4" RINGED CYLINDER VASE



M2—6"—18 OZ. MUG

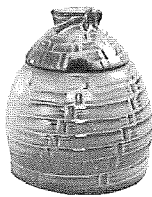


5M—5½"—16 OZ. MUG



4M—4½"—18 OZ. MUG

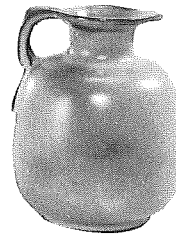
### HONEY JUGS—SYRUP PITCHERS—FLOWER CONTAINERS



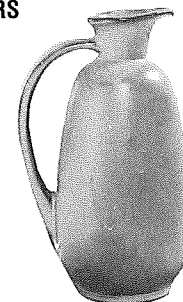
803—HONEY JAR W/LID



838—10 OZ. PITCHER



833—24 OZ. PITCHER



835—24 OZ. PITCHER

### "MUGS" for coffee, tea, milk, soup, soda. YOU NAME IT!



C1



C2



C3



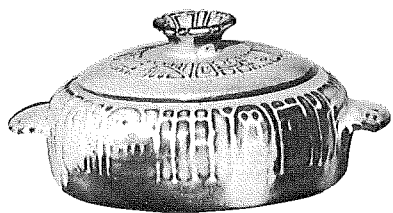
C5



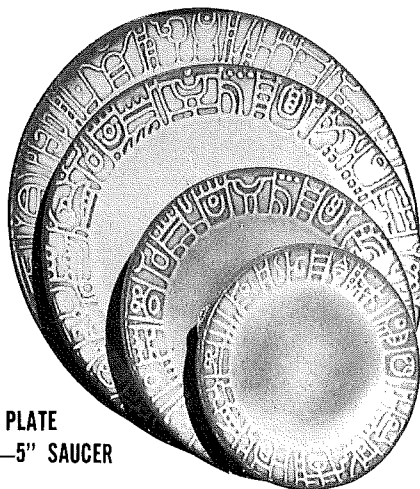
C9



# THE AZTEC COLLECTION



7V—2 QT. BAKER/BEAN POT  
7V/W—BAKER & WARMER, SET

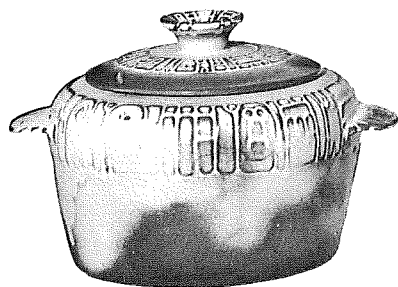


7FL—10" PLATE

7G—7" PLATE  
7E—5" SAUCER



7D—2 QT. PITCHER



7W—3 QT. BAKER/BEAN POT  
7W/W—BAKER & WARMER, SET



7B—SUGAR  
WITH LID

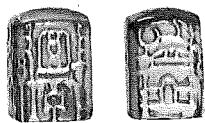


7A—6 OZ.  
CREAMER

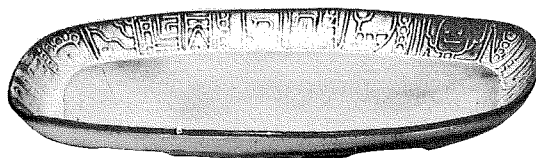


7C—CUP

7AB—CREAM & SUGAR SET



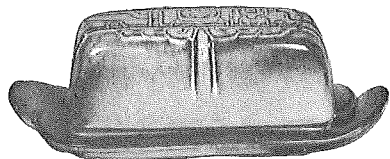
7H—SALT & PEPPER



7QS—13" STEAK PLATTER (SHALLOW PLATTER)



7M—14 OZ. MUG



7K—BUTTER DISH



7Q—13" DEEP PLATTER



7XO—8 OZ. FRUIT



7PS—9" TRAY



7X—14 OZ. CHILI-SOUP

## COLORS AVAILABLE

- GOLD
- GREEN
- WHITE
- NAVY/TERRA COTTA
- TEAL/TC
- WHITE/TC



7T—6 CUP TEAPOT



7J—2 CUP TEAPOT

## **FRANKOMA POTTERY**

A Division of Frankoma Industries, Inc.  
 Box 789 • 2400 Frankoma Road  
 Sapulpa, Oklahoma 74067  
 918-224-5511 • 800-331-3650  
 FAX 918-227-3117



# FRANKOMA

Handcrafted American Giftware Since 1933

A Division of Frankoma Industries, Inc.  
PO Box 789 • 2400 Frankoma Road  
Sapulpa, OK 74067  
(918) 224-5511 • (800) 331-3650 • Fax (918) 227-3117

## Retail Price List

Effective January 1994

### Dinnerware & Tabletop Accessories

ITEM NO	DESCRIPTION	PRICE	ITEM NO	DESCRIPTION	PRICE
---------	-------------	-------	---------	-------------	-------

#### ACADIEN CLASSIQUE COLLECTION

Colors: Black/Tc, White/Tc, Navy/Tc, Teal/Tc

AC4PPS	4 Pc. Place Setting (Dinner Plate, Salad/Dessert Plate, Bowl, Mug)	43.00
AC4TS	Service for 4	160.00
AC8S	Service for 8	300.00
ACF	10" Dinner Plate	16.00
ACG	7" Salad / Dessert Plate	9.50
ACXL	18 oz. Gumbo Bowl	10.00
ACC1	Acadien Classique Mug	8.00
ACBT	Bread Tray	16.00
ACCS	Coffee Service Set	45.00
ACDS	Demitasse Set	49.00
ACHD	10" Hors D'Oeuvre	25.00
ACN	2 Qt. Vegetable Bowl	29.00
ACP	13" Round Platter	35.00
ACTG	Acadien Classique Trivet	8.00
ACTS	Tureen Set	57.00

#### AZTEC COLLECTION

Colors: Green, Gold, White, White/Tc, Navy/Tc, Teal/Tc

75PPS	5 Pc. Place Setting (Dinner Plate, Salad/Dessert Plate, Bowl, Saucer, Cup)	38.00
7TS	Service for 4	152.00
7LS	Deluxe Service for 8	340.00
7FL	10" Dinner Plate	13.00
7G	7" Salad / Dessert Plate	7.00
7E	5" Saucer	5.50
7X	14 oz. Bowl	7.00
7C	Coffee Cup	8.00
7AB	Sugar & Creamer Set	20.00
7A	Creamer	9.00
7B	Sugar Bowl	11.00
7D	2 Qt. Pitcher	20.00
7H	Salt & Pepper Set	12.00
7J	2 Cup Teapot /w Lid	12.00
7K	Butter Dish	15.00
7M	14 oz. Mug	10.00
7N	1 Qt. Bowl	10.00
7PS	9" Platter/Tray	8.00
7Q	13" Platter	20.00
7QS	13" Steak Platter	15.00
7T	6 Cup Teapot /w Lid	19.00
7V	2 Qt. Baker /w Lid	24.00
7V/W	2 Qt. Baker /w Warmer	34.00
7W	2 1/2 Qt. Baker /w Lid	29.00
7W/W	3 Qt. Baker /w Warmer	39.00
7XO	8 oz. Fruit Bowl	6.00

#### HOLIDAY COLLECTION

Colors: Forest/Tc

HC4PPS	4 Pc. Place Setting (Dinner Plate, Salad/Dessert Plate, Bowl, Mug)	43.00
HCTS	Service for 4	160.00
HC8S	Service for 8	300.00
HCF	10" Dinner Plate	16.00
HCG	7" Salad / Dessert Plate	9.50
HCXL	18 oz. Bowl	10.00
HCC1	Holiday Mug	8.00
HCHD	10" Chip-N-Dip	25.00
HCN	2 Qt. Vegetable Bowl	29.00
HCP	13" Round Platter	35.00

#### NATIVE AMERICAN COLLECTION

Colors: Black/Tc, White/Tc, Navy/Tc, Bone/Tc, Forest/Tc, Teal/Tc, Cabernet/Tc

TB4PPS	4 Pc. Place Setting (Dinner Plate, Salad/Dessert Plate, Bowl, Mug)	43.00
TBTS	Service for 4	160.00
TB8S	Service for 8	300.00
TBF	10" Dinner Plate	16.00
TBG	7" Salad/Dessert Plate	9.50
TBXL	18 oz. Chili Bowl	10.00
TBC1	Native American Mug	8.00
TBH	Salt & Pepper Set	15.00
TBHD	10" Chip-N-Dip	25.00
TBN	2 Qt. Vegetable Bowl	29.00
TBP	13" Round Platter	35.00

#### PLAINSMAN COLLECTION

Colors: Green, Gold, Brown, Navy, Cntry Blue, Forest, Teal, Cabemet, White/Tc, Teal/Tc, Navy/Tc, Black/Tc

55PPS	5 Pc. Place Setting (Dinner Plate, Salad/Dessert Plate, Bowl, Saucer, Cup)	38.00
5TS	Service for 4	152.00
5LS	Deluxe Service for 8	340.00
5F	10" Dinner Plate	13.00
5G	7" Salad / Dessert Plate	7.00
5E	5" Saucer	5.50
5X	14 oz. Bowl	7.00
5C	Coffee Cup	8.00
5AB	Sugar & Creamer Set	20.00
5A	Creamer	9.00
5B	Sugar Bowl	11.00
5CC	5 oz. Teacup	6.00
5H	Salt & Pepper Set	12.00
5M	16 oz. Mug	10.00
5N	4 1/2 Qt. Bowl	36.00
5NC/D	Chip & Dip Set	44.00
5NS	9" Square Bowl	10.00
5P	17" Platter	35.00
5P/X	Platter Style Chip-N-Dip	47.00
5PS	9" Platter/Tray	8.00
5Q	13" Platter	20.00
5QD	13" Divided Bowl	20.00
5QS	13" Steak Platter	15.00
5V	2 Qt. Baker	24.00
5V/W	2 Qt. Baker /w Warmer	34.00
5W	3 Qt. Baker	29.00
5W/W	3 Qt. Baker /w Warmer	39.00

#### RANCH COLLECTION

Colors: Black/Tc, White/Tc, Navy/Tc, Bone/Tc, Forest/Tc, Teal/Tc, Cabernet/Tc

RN4PPS	4 Pc. Place Setting (Dinner Plate, Salad/Dessert Plate, Bowl, Mug)	43.00
RNTS	Service for 4	160.00
RN8S	Service for 8	300.00
RNF	10" Dinner Plate	16.00
RNG	7" Salad / Dessert Plate	9.50
RNXL	18 oz. Chili Bowl	10.00
RNC1	Ranch Mug	8.00

continued next page



**Dinnerware & Tabletop Accessories**

ITEM NO	DESCRIPTION	PRICE
<b>RANCH COLLECTION cont'd</b>		
RNHD	10" Chip-N-Dip	25.00
RNN	2 Qt. Vegetable Bowl	29.00
RNP	13" Round Platter	35.00

**Ranch/Wagon Wheel Accessories**

Available in Ranch Solid Colors or TC combinations

RNCS	Ranch Completer Set (Sugar, Creamer, Pitcher, Salt & Pepper, Teapot)	65.00
94AB	Sugar & Creamer Set	20.00
94D	2 Qt. Pitcher	24.00
94H	Salt & Pepper Set	14.00
94J	2 Cup Teapot	15.00

**ROSE COLLECTION**

Colors: Black/Tc, White/Tc, Navy/Tc, Bone/Tc, Forest/Tc, Teal/Tc, Cabernet/Tc

RS5PPS	5 Pc. Place Setting (Dinner Plate, Salad/Dessert Plate, Bowl, Saucer, Cup)	43.00
RSTS	Service for 4	160.00
RS8S	Service for 8	300.00
RSF	10" Dinner Plate	16.00
RSG	7" Salad / Dessert Plate	9.50
RSXL	18 oz. Bowl	10.00
RSC1	Rose Cup	8.00
6AB	Cream & Sugar Set	20.00
6H	Salt & Pepper Set	12.00
RSHD	10" Chip-N-Dip	25.00
RSJ	2 Cup Rose Teapot	15.00
RSN	2 Qt. Vegetable Bowl	29.00
RSP	13" Round Platter	35.00

**SEAFARE COLLECTION**

Colors: Black/Tc, White/Tc, Navy/Tc, Teal/Tc

SF4PPS	4 Pc. Place Setting (Dinner Plate, Salad/Dessert Plate, Bowl, Mug)	43.00
SFTS	Service for 4	160.00
SF8S	Service for 8	300.00
SFF	10" Dinner Plate	16.00
SFG	7" Salad / Dessert Plate	9.50
SFXL	18 oz. Chowder Bowl	10.00

ITEM NO	DESCRIPTION	PRICE
SFC1	Seafare (Crab) Mug	8.00
SFHD	10" Hors D'Oeuvre	25.00
SFN	2 Qt. Vegetable Bowl	29.00
SFP	13" Round Platter	35.00

**SPORTSMAN COLLECTION**

Colors: Bone/Tc, Forest/Tc

SP4PPS	4 Pc. Place Setting (Dinner Plate, Salad/Dessert Plate, Bowl, Mug**)	43.00
SPTS	Service for 4	160.00
SP8S	Service for 8	300.00
SPF	10" Dinner Plate	16.00
SPG	7" Salad / Dessert Plate	9.50
SPXL	18 oz. Bowl	10.00
SPHD	10" Hors D'Oeuvre	25.00
SPP	13" Round Platter	35.00

\*\* Please specify style of Mug \*\*

**WESTWIND COLLECTION**

Colors: Black, White, Navy, Cntry Blue, Teal, Cabernet, White/Tc, Teal/Tc, Navy/Tc, Black/Tc

65PPS	5 Pc. Place Setting (Dinner Plate, Salad/Dessert Plate, Bowl, Saucer, Cup)	38.00
6TS	Service for 4	152.00
6LS	Deluxe Service for 8	340.00
6F	10" Dinner Plate	13.00
6G	7" Salad / Dessert Plate	7.00
6E	5" Saucer	5.50
6X	14 oz. Bowl	7.00
6C	Coffee Cup	8.00
6AB	Sugar & Creamer Set	20.00
6A	Creamer	9.00
6B	Sugar Bowl	11.00
6H	Salt & Pepper Set	12.00
6J	2 Cup Teapot /w Lid	12.00
6N	1 Qt. Bowl	10.00
6P	11" Platter	10.00
6S	Gravy Boat	15.00
6S/SET	Gravy Boat & Tray	20.00
6T	6 Cup Teapot /w Lid	19.00
6T/W	Teapot /w Warmer	29.00
6U	18 oz. Baker	16.00
6V	2 1/2 Qt. Baker /w Lid	29.00
6V/W	2 1/2 Qt. Baker /w Warmer	39.00

**Listing of All Items by Code**

101	12" Indian Maiden	13.50
102	12" Coyote	13.50
103	Mare & Colt	13.50
104	14" Madonna	20.00
105	6" Squirrel	9.00
106	Pony Tail Girl	35.00
108	Mother Bird	7.00
109	Baby Bird	7.00
114	Seated Puma	15.00
116	Reclining Puma	15.00
118C	Comedy Mask	10.00
118T	Tragedy Mask	10.00
133	6 1/2" Boot Vase	8.50
134	4" Boot Vase	6.50
167	3 1/2" Horseshoe	5.00
170	Turtle Paperweight	5.00
172	6 1/2" Cylinder Vase	8.00
1C	3 oz. Mini Mug	5.00
1T	Toothpick Holder	5.00
208	12" Mallard Planter	14.00
208A	9 1/2" Mallard Planter	10.00
212	8" Round Bowl	9.50
212-2	6 1/2" Round Bowl	8.00
212-4	5" Round Bowl	6.50
218	Scalloped Bowl	16.00
222	Comucopia	19.00
224	8" Bowl	12.00
224-2	7 1/2" Bowl	10.00
224-3	6 1/2" Bowl	8.00
224-SET	Stackable Bowl Set	30.00
225	7" Leaf Tray	8.00
226	11" Leaf Tray	11.00
227	17" Leaf Tray Casserole	30.00

228	8" Swan Planter	12.00
242	Corn Dish	6.00
245	2 Qt. Tureen /w Lid	24.00
245/W	2 Qt. Tureen /w Warmer	34.00
246	3 Qt. Tureen /w Lid	29.00
246/W	Soup Tureen /w Warmer	39.00
247	Ladle For Soup Or Punch	12.00
249	Taco Holder	7.50
250	Warm Rolls Tile	6.00
251	Warm Bread Tile	6.00

**COASTERS**

265-66	Route 66 Coaster	5.50
265-BS	Bass Coaster	5.50
265-CO	Ski Colorado Coaster	5.50
265-CR	Crab Coaster	5.50
265-DR	Deer Coaster	5.50
265-FL	Old Glory Coaster	5.50
265-GS	Great Seal Coaster	5.50
265-HC	Holiday Coaster	5.50
265-LB	Liberty Bell Coaster	5.50
265-LH	Longhorn Coaster	5.50
265-OK	Oklahoma Shield Coaster	5.50
265-OS	Oklahoma Great Seal Coaster	5.50
265-PH	Pheasant Coaster	5.50
265-QL	Quail Coaster	5.50
265-TB	Thunderbird Coaster	5.50
265-TK	Turkey Coaster	5.50
265-TR	Trout Coaster	5.50
265-TX	Texas Coaster	5.50
265-WD	Wood Duck Coaster	5.50
265P	3 1/2" Coaster	5.00

**ALL Coasters available in a handsomely gift boxed Set of 4 (Specify design)** 24.00



ITEM NO	DESCRIPTION	PRICE	ITEM NO	DESCRIPTION	PRICE
266	Tortilla Warmer	19.00	6G	7" Salad / Dessert Plate	7.00
266G	Garlic Baker	19.00	6H	Salt & Pepper Set	12.00
267	Loaf Pan	19.00	6J	2 Cup Teapot /w Lid	12.00
268	Chip-N-Dip	30.00	6N	1 Qt. Bowl	10.00
269	Football Chip-N-Dip (NEW)	20.00	6P	11" Platter	10.00
			6S	Gravy Boat	15.00
			6S/SET	Gravy Boat & Tray	20.00
			6T	6 Cup Teapot /w Lid	19.00
			6T/W	Teapot /w Warmer	29.00
			6U	18 oz. Baker	16.00
			6U/W	18 oz. Baker /w Warmer	25.00
			6V	2 1/2 Qt. Baker /w Lid	29.00
			6V/W	2 1/2 Qt. Baker /w Warmer	39.00
			6X	14 oz. Bowl	7.00
			72	10" Cylinder Vase	10.00
			72-SET	Pasta Canister Set	39.00
			72T	Wine Cooler	10.00
			7AB	Sugar & Creamer Set	20.00
			7A	Creamer	9.00
			7B	Sugar Bowl	11.00
			7B-L	Lid only	4.00
			7C	Coffee Cup	8.00
			7D	2 Qt. Pitcher	20.00
			7E	5" Saucer	5.50
			7FL	10" Dinner Plate	13.00
			7FS	Cherokee Alphabet Plate	9.50
			7G	7" Salad / Dessert Plate	7.00
			7H	Salt & Pepper Set	12.00
			7J	2 Cup Teapot /w Lid	12.00
			7K	Butter Dish	15.00
			7M	14 oz. Mug	10.00
			7N	1 Qt. Bowl	10.00
			7PS	9" Platter/Tray	8.00
			7Q	13" Platter	20.00
			7QS	13" Steak Platter	15.00
			7T	6 Cup Teapot /w Lid	19.00
			7TR	Cherokee Alphabet Trivet	6.50
			7T/W	Aztec 6 Cup Teapot /w Warmer	29.00
			7V	2 Qt. Baker /w Lid	24.00
			7V/W	2 Qt. Baker /w Warmer	34.00
			7W	2 1/2 Qt. Baker /w Lid	29.00
			7W/W	3 Qt. Baker /w Warmer	39.00
			7X	14 oz. Bowl	7.00
			7XO	8 oz. Fruit Bowl	6.00
			80	2 Qt. Pitcher	24.00
			803	Honey Jar /w Lid	10.00
			809	9" Egg Plate	19.00
			81	1 Qt. Pitcher	16.00
			818	Lazy Susan	40.00
			819	12" Egg Plate	25.00
			82	Carafe	28.00
			82T	Beverage Server	28.00
			833	24 oz. Pitcher	9.50
			835	24 oz. Pitcher	9.50
			838	10 oz. Pitcher	8.00
			8TR	Bird Trivet	6.50
			91	10" Tray	14.00
			91/BP	Chip-N-Dip Plate	24.00
			94A	Creamer	8.00
			94B	Sugar Bowl	12.00
			94C	Wagon Wheel Coffee Cup	9.50
			94D	2 Qt. Pitcher	24.00
			94E	5" Saucer	6.00
			94FL	10" Dinner Plate	16.00
			94G	7" Salad/Dessert Plate	9.50
			94H	Salt & Pepper Set	14.00
			94J	2 Cup Teapot	15.00
			94M	Wagon Wheel 16 oz. Mug	15.00
			94Q	13" Serving Platter	30.00
			94TR	Rooster Trivet	6.50
			94X	14 oz. Bowl	12.00
			ACF	10" Dinner Plate	16.00
			ACG	7" Salad / Dessert Plate	9.50
			ACXL	18 oz. Gumbo Bowl	10.00
			ACC1	Acadien Classique Mug	8.00
			ACBT	Bread Tray	16.00
			ACCS	Coffee Service Set	45.00
			ACDS	Demitasse Set	49.00
			ACHD	10" Hors D'Oeuvre	25.00
			ACN	2 Qt. Vegetable Bowl	29.00
			ACP	13" Round Platter	35.00

## CANISTERS

26SET	4 Piece Canister Set	84.00
26F	Flour Canister	34.00
26S	Sugar Canister	27.00
26C	Coffee Canister	23.00
26T	Tea Canister	19.00
26G	Sugar/Grease	17.00
26GC	Grease Cont. /w Strainer	25.00
26-lids	**Specify size required**	6.00
26H	Salt & Pepper Set	15.00
26LC	Goblet	8.00
272	4" Cylinder Vase	6.00
302	6" Candle Vase	8.00
383	Boot Bank	8.50
40A	4" Pitcher	7.50
40AB	Pitcher & Bowl Set	12.00
40B	5" Bowl	5.50
433	Boot Bookends	35.00
453	7" Arrowhead Tray	8.00
459P	Candy Dish	7.00
459P-B	Texas Candy Dish /w Blue Bonnet	9.00
461	Oklahoma Ashtray	7.00
463	4" Mini Arrowhead Tray	5.00
4D	2 Qt. Pitcher	24.00
4H	Salt & Pepper Shaker	12.00
4K	Butter Dish	13.00
4K-B	Bottom Only	7.00
4K-T	Top Only	7.00
4M	18 oz. Mug	10.00
4SC	11 oz. Soup Cup	8.00
4V	2 Qt. Baker	24.00
4V/W	2 Qt. Baker /w Warmer	34.00
4W	3 Qt. Baker	29.00
4W/W	3 Qt. Baker /w Warmer	39.00
4X	14 oz. Cereal Bowl	7.00
4X	Set of 4 Bowls	24.00
4Y	Spoon Rest	6.00
4Y-B	Spoon Rest /w Blue Bonnet	8.00
504	Miniature Sugar	6.50
553	Miniature Creamer	6.50
5AB	Sugar & Creamer Set	20.00
5A	Creamer	9.00
5B	Sugar Bowl	11.00
5C	Coffee Cup	8.00
5CC	5 oz. Teacup	6.00
5E	5" Saucer	5.50
5F	10" Dinner Plate	13.00
5G	7" Salad / Dessert Plate	7.00
5H	Salt & Pepper Set	12.00
5M	16 oz. Mug	10.00
5N	4 1/2 Qt. Bowl	36.00
5NC/D	Chip & Dip Set	44.00
5NS	9" Square Bowl	10.00
5P	17" Platter	35.00
5P/X	Platter Style Chip-N-Dip	47.00
5PS	9" Platter/Tray	8.00
5Q	13" Platter	20.00
5QD	13" Divided Bowl	20.00
5QS	13" Steak Platter	15.00
5V	2 Qt. Baker	24.00
5V/W	2 Qt. Baker /w Warmer	34.00
5W	3 Qt. Baker	29.00
5W/W	3 Qt. Baker /w Warmer	39.00
5X	14 oz. Bowl	7.00
66C1	Route 66 Mug	8.00
6AB	Sugar & Creamer Set	20.00
6A	Creamer	9.00
6B	Sugar Bowl	11.00
6C	Coffee Cup	8.00
6E	5" Saucer	5.50
6F	10" Dinner Plate	13.00



## Listing of All Items by Code

ITEM NO	DESCRIPTION	PRICE	ITEM NO	DESCRIPTION	PRICE
ACTG	Acadian Classique Trivet	8.00	PK07	Assorted Set Of 6 Pumpkins	87.50
ACTS	Tureen Set	57.00	PK16-S	Set of 4 Pumpkin Tureen/Planter	128.00
ARBP	Arkansas Bake Pan	15.00	PK22J-S	Set of 6 - 6" Jack 'O' Lantern	114.00
ARC1	Arkansas Razorback Mug	9.00	PK23J-S	Set of 4 - 8" Jack'O'Lantern	104.00
ARTR	Arkansas State Trivet	6.50			
BP	6 oz. Bean Pot	6.00	QLC1	Quail Mug	8.00
BSC1	Bass Mug	8.00	RNC1	Ranch Mug	8.00
C1	Coffee Mug	8.00	RNF	10" Dinner Plate	16.00
C15	Drill Bit Mug	10.00	RNG	7" Salad / Dessert Plate	9.50
C19	Coffee Mug	8.00	RNHD	10" Chip-N-Dip	25.00
C2	Coffee Mug	8.00	RNN	2 Qt. Vegetable Bowl	29.00
C20	Travel Mug	10.00	RNP	13" Round Platter	35.00
C3	Coffee Mug	8.00	RNXL	18 oz. Chili Bowl	10.00
C33	Boot Mug	9.00	RSC1	Rose Cup	8.00
C5	Coffee Mug	8.00	RSF	10" Dinner Plate	16.00
C9	Coffee Mug	8.00	RSG	7" Salad / Dessert Plate	9.50
CBTR	Cowboy Trivet	6.50	RSHD	10" Chip-N-Dip	25.00
CFC	Crawfish Caddy	12.00	RSJ	2 Cup Rose Teapot	15.00
CFC	Crawfish Caddy (Case of 12)	10.00	RSN	2 Qt. Vegetable Bowl	29.00
CL	Clock	30.00	RSP	13" Round Platter	35.00
COC1	Ski Colorado Coffee Mug	8.00	RSXL	18 oz. Bowl	10.00
CP94	Christmas Plate 1994	19.00			
DKY94	1994 Donkey Mug	9.50	SCTR	Scissortail Trivet	6.50
DRC1	Deer Mug	8.00	SFC1	Seafare (Crab) Mug	8.00
DTR	Plain Trivet	6.50	SFF	10" Dinner Plate	16.00
F29	6" Drapery Vase	9.00	SFG	7" Salad / Dessert Plate	9.50
F30AB	Pitcher & Bowl	18.00	SFHD	10" Hors D'Oeuvre	25.00
F52	Floral Container	9.00	SFN	2 Qt. Vegetable Bowl	29.00
FBP1	Combread Baker	18.00	SFP	13" Round Platter	35.00
FBP2	Fajita Server	18.00	SFXL	18 oz. Chowder Bowl	10.00
FP60	Frankoma 60th Anniversary Plate	25.00	SJ	Spoon Jar	15.00
FPC1	Frankoma Pottery Mug	9.00	SPF	10" Dinner Plate	16.00
FS	Frankoma Sign	15.00	SPG	7" Salad / Dessert Plate	9.50
G1	Coffee Mug	8.00	SPHD	10" Hors D'Oeuvre	25.00
G1FL	USA Flag Mug	8.00	SPP	13" Round Platter	35.00
G1GS	USA Great Seal Mug	8.00	SPXL	18 oz. Bowl	10.00
G1LB	Liberty Bell Mug	8.00			
GOP94	1994 Elephant Mug	9.50	T9	7" Claw Shell Bowl	12.00
HBP	10" Heart Bake Pan	15.00	T10	12" Shell Claw Bowl	35.00
HCG1	Holiday Mug	8.00	T7SP	Simmer Pot	14.50
HCF	10" Dinner Plate	16.00	TEX-1	Texas Souvenir Plate	9.50
HCG	7" Salad / Dessert Plate	9.50	TBC1	Native American Mug	8.00
HCHD	10" Chip-N-Dip	25.00	TBF	10" Dinner Plate	16.00
HCN	2 Qt. Vegetable Bowl	29.00	TBG	7" Salad/Dessert Plate	9.50
HCP	13" Round Platter	35.00	TBH	Salt & Pepper Set	15.00
HCXL	18 oz. Bowl	10.00	TBHD	10" Chip-N-Dip	25.00
KS-1	Kansas State Plate	9.50	TBN	2 Qt. Vegetable Bowl	29.00
LABP	Louisiana Bake Pan	12.00	TBP	13" Round Platter	35.00
LATR	Louisiana State Trivet	6.50	TBXL	18 oz. Chili Bowl	10.00
LCTR	Louisiana Crawfish Trivet	6.50	TKC1	Turkey Mug	8.00
M2	18 oz. Stein	10.00	TP	17" Oval Platter	39.00
M5	18 oz. Drill Bit Mug	14.00	TR66	Historic Route 66 Trivet	6.50
MC	Milkcan Salt & Pepper Set	15.00	TRFL	Old Glory Trivet	7.90
MHBP	6" Heart Candy Dish	12.00	TRGS	USA Great Seal Trivet	7.90
MOKBP	Mini Oklahoma Bake Pan	10.00	TRLB	Liberty Bell Trivet	7.90
MTXBP	Mini Texas Bake Pan	12.00	TST	Texas Trivet	8.00
MTXBP	Mini Texas Bake Pan (12 pack)	11.50	TST-B	Texas Trivet /w Blue Bonnet	10.00
OK1	Oklahoma State Plate	9.50	TRC1	Trout Mug	8.00
OK2	Sooner State Plate	9.50	TXBP	Texas Bake Pan	15.00
OK3	5 Tribes Trivet	6.50	TXBP	Texas Bake Pan (12 pack)	14.00
OK66	Ok Historic Route 66 Trivet	6.50	TXBP	Texas Bake Pan (48 pack)	13.50
OKBP	11 1/2" Oklahoma Bake Pan	15.00	TXBP-B	Texas Bake Pan /w Blue Bonnet	17.00
OKBP	Oklahoma Bake Pan (12 pack)	14.00	TXBP/BP	Texas /w Bean Pot	24.00
OKBP	Oklahoma Bake Pan (48 pack)	13.50	TXBPCD	Texas Chip-N-Dip	15.00
OKBP/BP	Oklahoma /w Bean Pot	24.00	TXBPCD-B	Texas Chip-N-Dip/w Blue Bonnet	18.00
OKC1	Oklahoma Mug	9.00	TXBPRD	Texas Relish Dish	15.00
OKTR	Oklahoma Trivet	7.90	TXBPRD-B	Texas Relish Dish /w Blue Bonnet	18.00
PHC1	Pheasant Mug	8.00	TXC1	Texas Mug	8.00
PK01-S	5" Round Set Of 6 Pumpkins	63.00	WA1	8" Warmer For Bakers	11.00
PK02-S	7" Round Set Of 6 Pumpkins	99.00	WA3	6" Warmer For 18 oz. Baker	9.00
PK03-S	5" On-Side Set Of Pumpkins	87.00	WDC1	Wood Duck Mug	8.00
PK04-S	6" Round Set Of 6 Pumpkins	78.00	WHG1	White House Mug	8.00
PK05-S	7" Round Set Of 6 Pumpkins	99.00			
PK06-S	6" On-Side Set Of Pumpkins	99.00			

**Standard Fired Litho Transfers** (Blue Bonnet, Crawfish, Chili Peppers, Sunflowers, Dogwood Blossom, Magnolias ...and more) available on most items for an additional \$2.00







# FRANKOMA

Handcrafted American Giftware Since 1933

*Frankoma*  
*1933*







# **FRANKOMA**

**Handcrafted American Giftware Since 1933**

**A Division of Frankoma Industries, Inc.**

**Box 789 • 2400 Frankoma Road • Sapulpa, OK 74067**

**918-224-5511 • 800-331-3650 • Fax 918-227-3117**



12  
18  
92

12  
192  
240

# FRANKOMA

Handcrafted American Giftware Since 1933

A Division of Frankoma Industries, Inc.

Box 789 • 2400 Frankoma Road • Sapulpa, OK 74067

918-224-5511 • 800-331-3650 • Fax 918-227-3117